

## SOPHIA MICRO



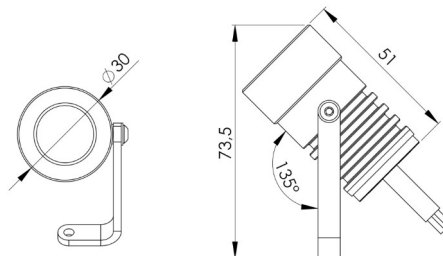
The FLOODLIGHTS series was designed using modern simulation methods in order to obtain the highest product quality.



### PRODUCT SPECIFICATIONS

Working temperature range	-20°C ÷ +55°C
Power consumption	2W
IP protection class	IP67
Lifetime L80B10	≥ 60 000h
Impact resistance	IK10
Protection class	III
Connection	0.5m
Wiring	H05RN-F 2X0.5
Dimming	ON-OFF/PWM
Luminous flux tolerance	±10%
Angle of distribution	17°, 31°, 39°

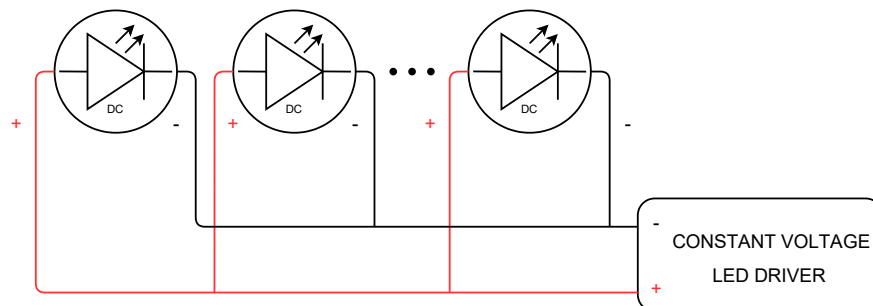
### DIMENSIONAL DRAWINGS



## SOPHIA MICRO

### CONNECTION

Connecting to the power supply should be done when the power supply is off.



### ACCESSORIES

- SOPHIA MICRO SPIKE mounting accessory

